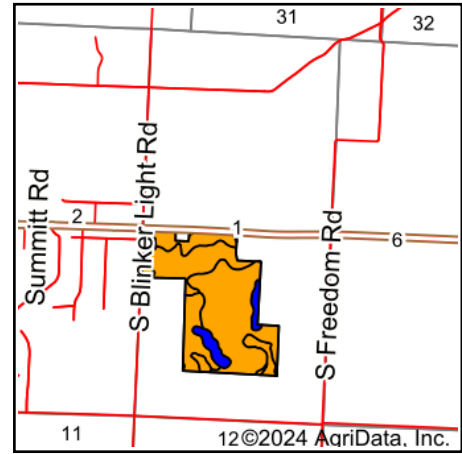
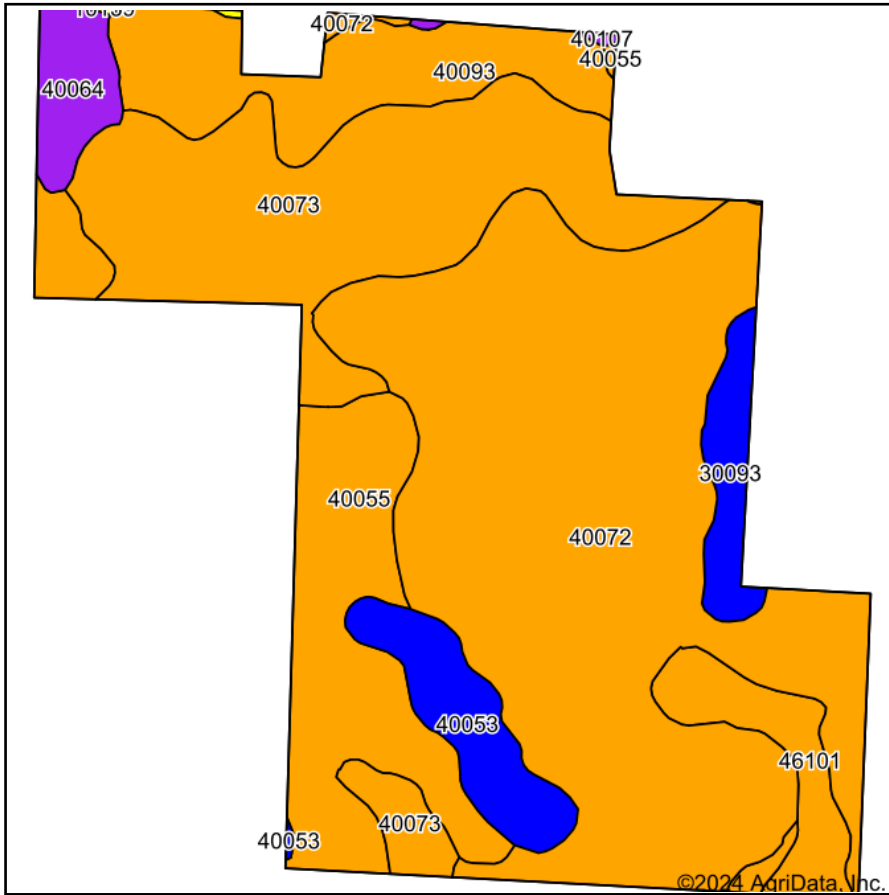


# Soils Map



State: **Missouri**  
 County: **Cass**  
 Location: **1-44N-31W**  
 Township: **Grand River**  
 Acres: **229**  
 Date: **1/2/2024**



Maps Provided By:



Soils data provided by USDA and NRCS.

Area Symbol: MO037, Soil Area Version: 26

Code	Soil Description	Acres	Percent of field	Non-Irr Class Legend	Non-Irr Class *c	Alfalfa hay Tons	Caucasian bluestem Tons	Common bermudagrass Tons	Orchardgrass red clover Tons	Tall fescue Tons	Warm season grasses Tons	*n NCCPI Soybeans
40072	Kenoma silt loam, 1 to 3 percent slopes	101.84	44.5%		IIIe							59
40073	Kenoma silt loam, 4 to 7 percent slopes	48.32	21.1%		IIIe							59
40055	Deepwater silt loam, 5 to 9 percent slopes	29.11	12.7%		IIIe							79
40093	Summit silty clay loam, 5 to 9 percent slopes	19.60	8.6%		IIIe							60
40053	Deepwater silt loam, 2 to 5 percent slopes	9.74	4.3%		Ile							80
46101	Verdigris silt loam, 1 to 3 percent slopes, frequently flooded	8.34	3.6%		IIIw							66
40064	Eram silty clay loam, 5 to 14 percent slopes	5.83	2.5%		VIe							43
30093	Haig silt loam, 0 to 2 percent slopes	5.73	2.5%		IIw							65
40107	Snead-Rock outcrop complex, warm, 5 to 14 percent slopes	0.27	0.1%		VIe							34



10139	Snead silty clay loam, 5 to 14 percent slopes	0.22	0.1%		Ive	4	6	4	6	5	7	35
<b>Weighted Average</b>					<b>3.01</b>	*-	*-	*-	*-	*-	*-	<b>*n 62.5</b>

\*n: The aggregation method is "Weighted Average using all components"

\*c: Using Capabilities Class Dominant Condition Aggregation Method

Soils data provided by USDA and NRCS.